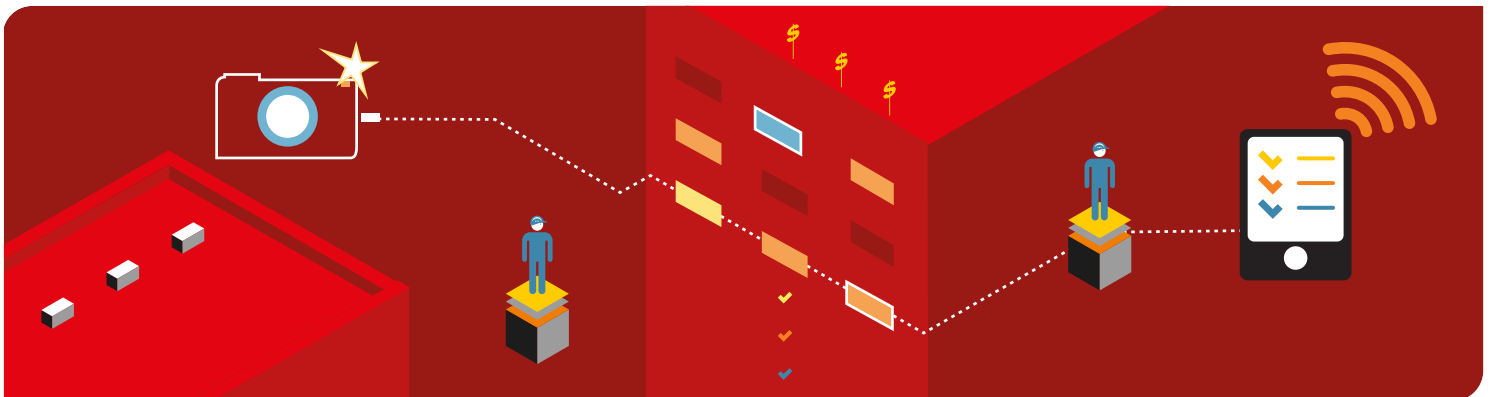


# aurigo® INSPECT



## Digitize your field inspections & eliminate errors

*Say NO to paper clipboards, capture digital pictures and GPS coordinates*

A large portion of all construction workers are on the job site. Using paper clipboards to capture field data is cumbersome to compile, and inaccurate. Aurigo Inspect gives field workers the advantage by connecting them to their project data.

### Feature Summary

- Digital inspection reports
- Attach drawings and site photos
- Reduce inspection time by over 70%
- Eliminate errors
- Integrated with GIS and GPS
- Real-time & configurable

*Overcome your organization's challenges - deploy a powerful mobile inspection system and learn the advantages of **aurigo®** INSPECT, to manage and monitor capital projects and facilities better.*

Contact us for a demo!

E-mail: [sales@aurigo.com](mailto:sales@aurigo.com)  
Web : [www.aurigo.com](http://www.aurigo.com)

### Improve Field Personnel Efficiency

*Comprehensive and intuitive inspection system*

- Simplifies data capture
- Generates standard reports
- Eliminates data re-keying
- Reduces inspection time by over 70%
- Synchronizes easily with central system
- Enables quicker decision making
- Performs comprehensive search and indexing of records
- Ensures data security with 128 bit data encryption

### Accurate Data Capture

*Project data is always available*

- Supports laptop computers, tablets and PDAs
- User friendly interface
- Radio buttons and check boxes eliminate input errors
- Attach documents and pictures
- Built-in spell checking
- Captures GPS coordinates

### Offline & Online Support

*Support remotely connected sites*

- Supports disconnected or partially connected sites
- Small footprint client with offline data entry support
- Synchronization at any time
- Data cached on mobile client for ease of use

### Comprehensive Reporting

*Access over 100 ready reports*

- Create or modify reports
- Convert to any format including PDF
- Import / export data that supports Excel or CSV formats

